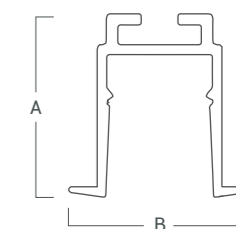
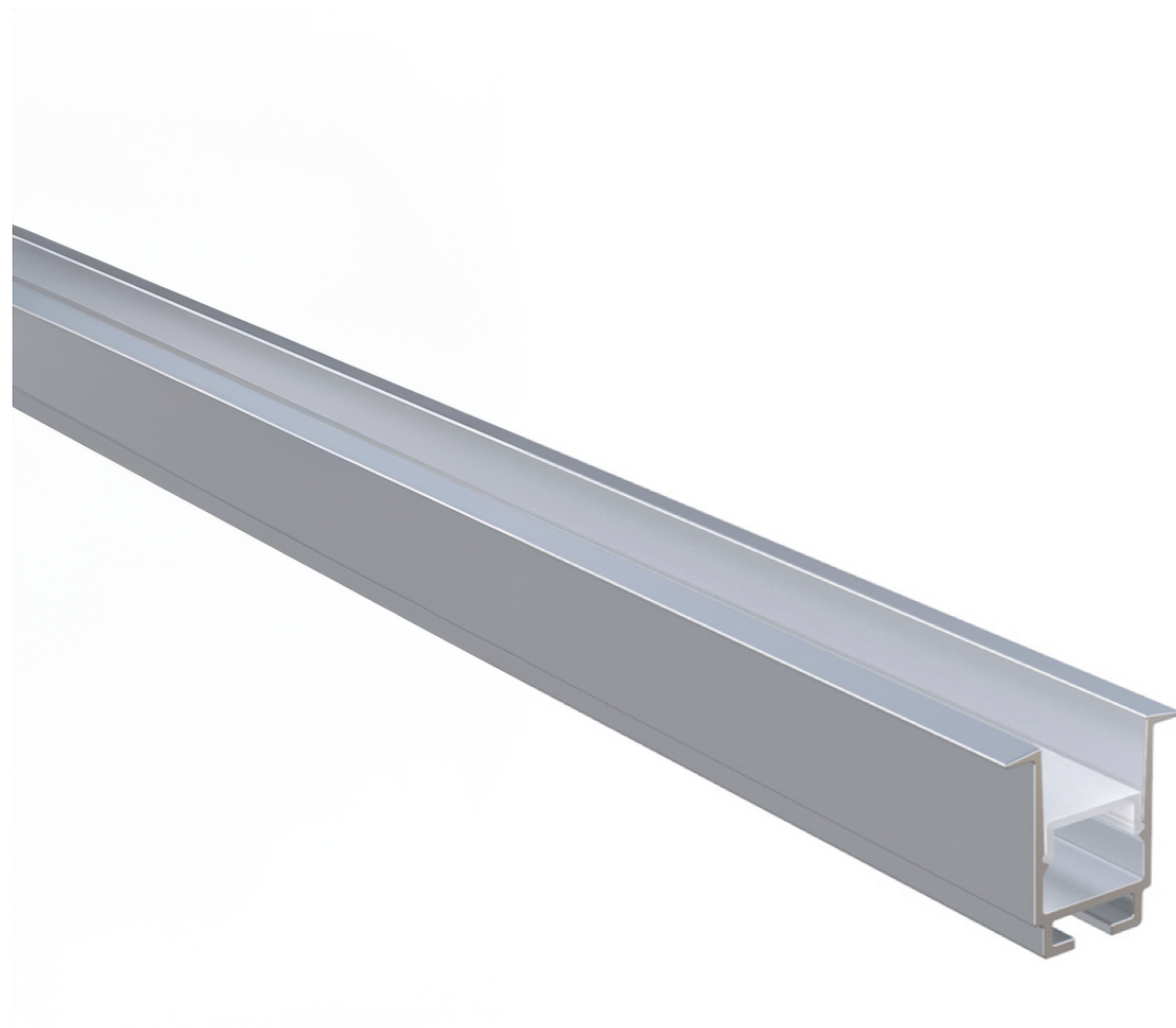


DESCRIPCIÓN

Sistema lineal de embutir

Cuerpo	Difusor
Al	PMMA



A 23,5 mm
B 23,3 mm

Largo de 1000 mm
2000 mm
3000 mm

TIRAS LED	POTENCIA x METRO Y TENSIÓN	T° DE COLOR	IP	COLOR
VK-NECK D 2215-2835-240-90-24 2700 B	19W-24V	2700°K	20	●
VK-NECK D 2215-2835-240-90-24 3000 B	19W-24V	3000°K	20	●
VK-NECK D 2215-2835-112-90-24 2700 B	9,6W-24V	2700°K	20	●
VK-NECK D 2215-2835-112-90-24 3000 B	9,6W-24V	3000°K	20	●
VK-NECK D 2215-2835-240-80-24 2700 B	19W-24V	2700°K	20	●
VK-NECK D 2215-5630-60-80-24 2750 B	18W-24V	2750°K	20	●
VK-NECK D 2215-2835-120-80-12 2700 B	16W-12V	2700°K	20	●
VK-NECK D 2215-2835-120-80-12 3000 B	16W-12V	3000°K	20	●
VK-NECK D 2215-2835-120-80-12 4000 B	16W-12V	4000°K	20	●
VK-NECK D 2215-2110-280-90-24 2240 B	10,5W x2-24V	2000-4000°K	20	●
VK-NECK D 2215-5050-60-24 RGBWW B	18W-24V	R-G-B-WW	20	●
VK-NECK D 2215-5050-60-12 RGB B	14W-12V	R-G-B	20	●