

---

## 1. Product overview

### 1. Product introduction

A 1 series switch is a self-generating wireless switch. It does not require batteries. It has a built-in energy acquisition module, which can convert the mechanical energy of pressing into electrical energy, and the electrical energy drives the radio frequency chip to work. The switch can be used with Eberon controller to realize wireless control of lamps and lanterns (dimming control is not supported); it can also be used as a scene switch panel to realize scene control. The switch adopts a one-piece design ( 1-3 keys are optional), which can be combined with products such as Eberon A 1 series sockets to form a one-piece panel, which is suitable for new indoor installations.

### 2. Product Image

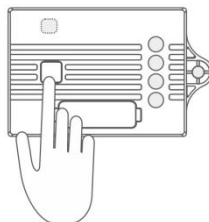


## 2. Functional characteristics

### 1. Pair with the Eberon wireless receiver controller

#### a. Normal pairing

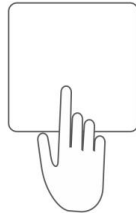
The A1 series switch can be paired with the wireless receiver controller. The pairing method is to press and hold the "pairing button" on the controller for about 3 seconds, and release the button when the indicator light flashes.



Then press the corresponding button of the A1 series switch once (do not press continuously and

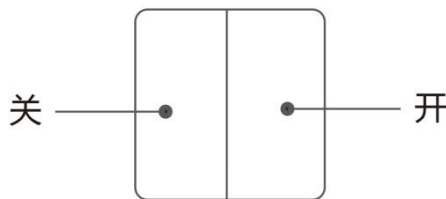
---

quickly), the indicator light goes off, indicating that the pairing is successful, you can use the button to control the on and off of the wireless receiver controller. (For the function introduction of the receiver, please refer to the specification book corresponding to the wireless receiver controller).



### b. Orientation pairing (generally use A1 series double key switch)

In order to conform to the user's traditional usage habits and ensure the synchronization of on and off of multiple controllers in one control and multi-mode, the directional pairing mode of the switch can be used. The pairing method of directional pairing is to press and hold the "pairing button" on the controller for about 3 seconds, release the button when the indicator light flashes, and press any button of the A1 two-button switch four times (within 1 second), the indicator light of the controller is off, indicating that the pairing is successful. At this time, press the left button of the switch to turn off, and press the right button of the switch to turn on.



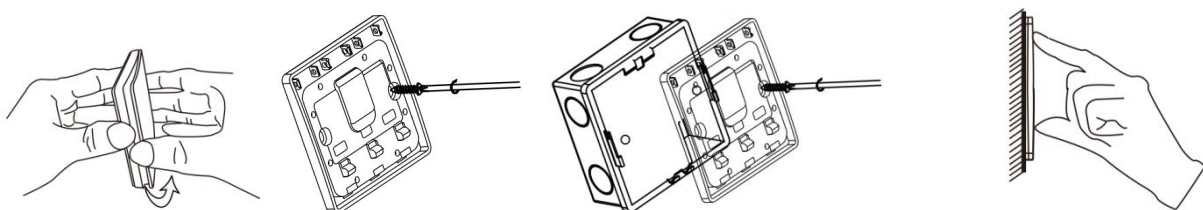
## 2. Switch installation instructions

Method 1: The A1 switch can be directly pasted on a stable and clean surface such as glass surface, marble surface and ceramic tile surface with the attached 3M glue.



1. Stick the double-sided tape on the back
2. Stick the switch on a clean surface

Method 2: Use screws to fix it on the expansion rubber particles on the wall or on the 86-type junction box.



1. Open the button
2. Lock the switch base to the expansion rubber pellet on the wall or into

the 86-type junction box 3. Press the button to put it back on the base

Method 3: Directly install it on the conjoined frame and fix it (press to fix it).

### 3. Other instructions

A 1 series wireless switch does not support dimming control, but only supports turning on and off lamps.

### 3. Specifications

project	parameter
job type	rebound
Power supply	self-generated electricity
Modulation	FSK
letter of agreement	RF 433MHz
Number of keys	1 - 3 keys
Communication distance	80m (outdoor) 25m (indoor)
service life	≥100,000 times
color	white/gold/grey/silver
physical dimension	L87.59mm*W85.60*H15.27mm
Operating temperature	-20°C ~ +55°C
storage temperature	-20°C ~ +65°C
Working humidity	0% - 60% (non-condensing)
Storage humidity	0% - 70% (non-condensing)
shell material	PC

### 4. Product size

