

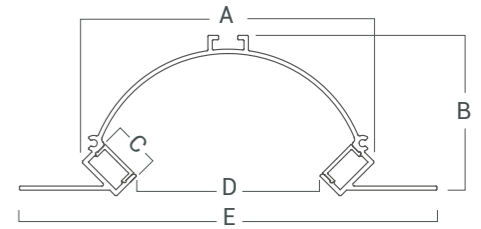
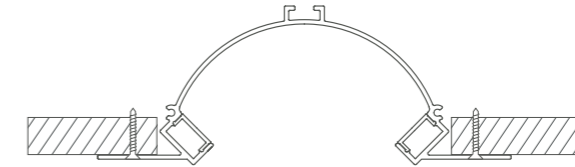
DESCRIPCIÓN

Sistema lineal para dos tiras led. Instalación sencilla. Distribución de luz directa-simétrica con alto control de deslumbramiento.

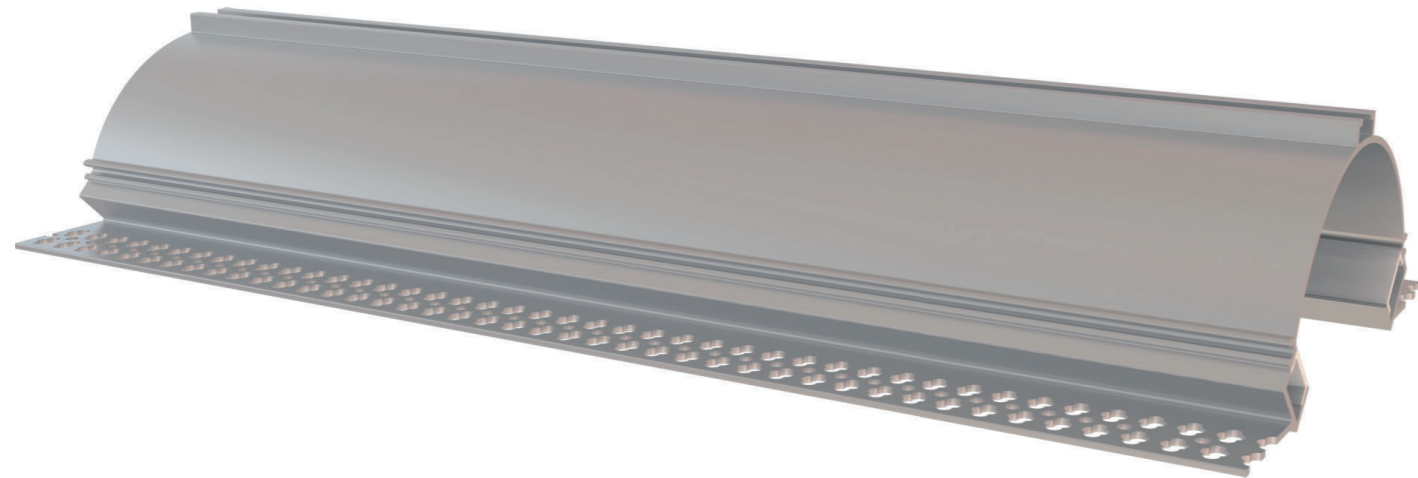
Cuerpo	Difusor
Al	PMMA



TAPA PLÁSTICA



A	92,91 mm
B	51,19 mm
C	12,5 mm
D	58,64 mm
E	133,22 mm
Largo	1000 mm 2000 mm 3000 mm



TIRAS LED

TIRAS LED	POTENCIA	T° DE COLOR	IP	COLOR
VK-NECK CENTRAL-2835-240-90-24 2700 B	38	2700°K	20	○
VK-NECK CENTRAL-2835-240-90-24 3000 B	38	3000°K	20	○
VK-NECK CENTRAL-2835-240-80-24 2700 B	39	2700°K	20	○
VK-NECK CENTRAL-2835-240-80-24 3000 B	38	3000°K	20	○
VK-NECK CENTRAL-2835-112-90-24 2700 B	20	2700°K	20	○
VK-NECK CENTRAL-2835-112-90-24 3000 B	20	3000°K	20	○
VK-NECK CENTRAL-2835-120-80-12 2700 B	19,2	2700°K	20	○
VK-NECK CENTRAL-2835-120-80-12 3000 B	19,2	3000°K	20	○
VK-NECK CENTRAL-5630-60-80-24 2750 B	19,2	2750°K	20	○
VK-NECK CENTRAL-2110-280-90-24 2240 B	2 x 19,2	2000-4000°K	20	○
VK-NECK CENTRAL-5050-60-24 RGBWW B	28	R-G-B, 2700°K	20	○
VK-NECK CENTRAL-5050-60-12 RGB B	18	R-G-B	20	○